

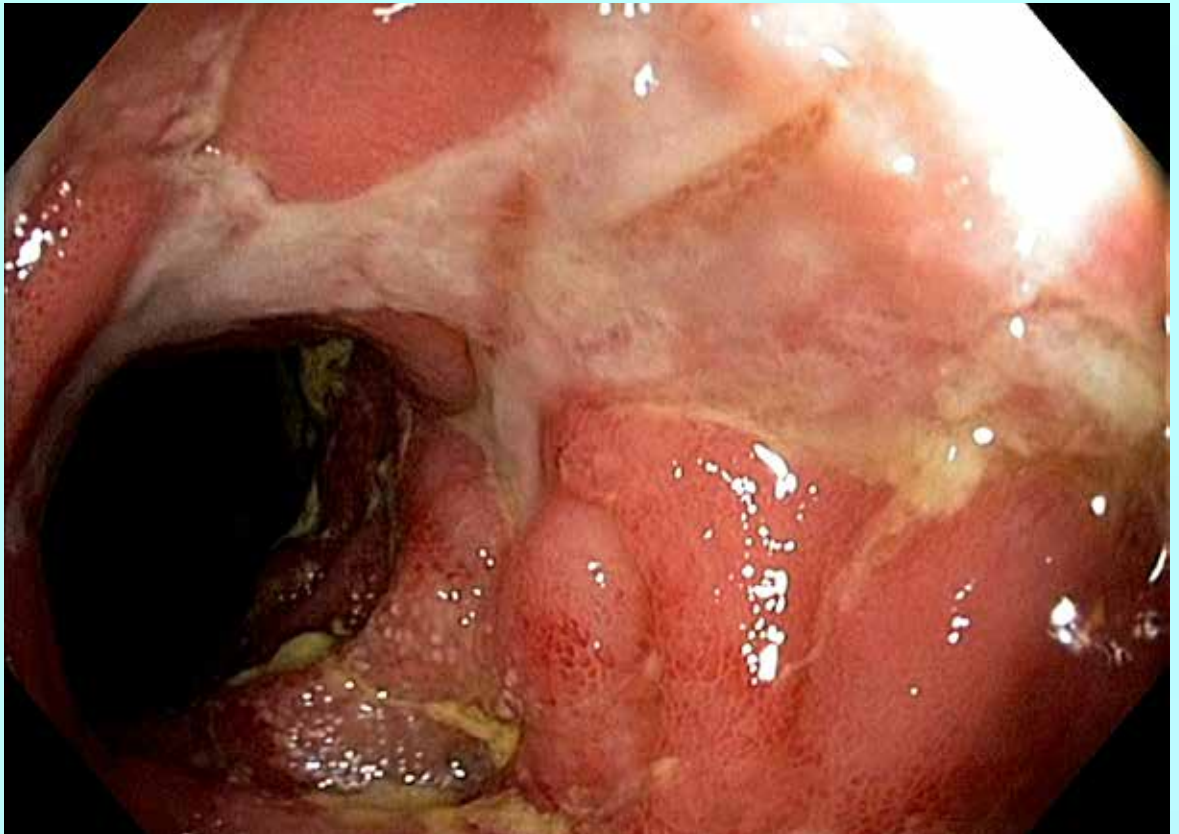
*The*

# **Gastrolab**

*Endoscopic Image*

# **Journal**

Nr 14 March 31, 2024



## **Crohn's Disease**



## The GASTROLAB Endoscopy Image JOURNAL: A Pinnacle in Medical Imaging Excellence

Since its inception in early 2024, The GASTROLAB Endoscopy Image Journal stands as a pioneering publication in the realm of medical imaging. Released every Tuesday, this weekly magazine, accessible at [www.vpress.ovh/journal.htm](http://www.vpress.ovh/journal.htm), offers an unparalleled exploration of various themes, showcasing high-quality images focusing on specific aspects of the digestive tract or diseases.

### A Global Beacon of Endoscopic Excellence

With an ambitious vision, we aspire for The GASTROLAB Endoscopy Image JOURNAL to be recognized as the preeminent publication in its field worldwide. We invite collaboration from the esteemed medical community to contribute their exceptional endoscopic images, thereby fostering a collective effort to make this journal the most comprehensive of its kind globally.

We encourage individuals possessing noteworthy endoscopic images to submit them to [glabinfo@gmail.com](mailto:glabinfo@gmail.com). Please include a brief caption, a clear indication of permission for publication on our site, and specify whether a copyright sign and your email address should accompany the images. This ensures potential commercial publishers can seek permission directly from contributors for any intended use.

### Partner with Excellence: Science Photo Library

For those seeking to publish images featured in our journal, we recommend reaching out to Science Photo Library (<https://www.scienc>

[cephoto.com/contributor/gas+h9b](http://cephoto.com/contributor/gas+h9b)), the foremost provider of science images. Their expertise ensures proper dissemination and ethical usage of all images in this journal.

### Support Our Mission

If you wish to support The GASTROLAB Endoscopy Image Journal through advertisements or other means, kindly contact us at [glabinfo@gmail.com](mailto:glabinfo@gmail.com). Your support not only facilitates the continuation of this vital resource but also contributes to the success of budding endoscopists worldwide.

### A Noble Purpose

Under the editorial leadership of Hans Björknäs, our Editor-in-Chief, The GASTROLAB Endoscopy Image Journal seeks to be more than just a publication; it aims to be a catalyst for success. If this magazine aids even one young, aspiring endoscopist in their career journey, we consider our mission accomplished.

Join us in shaping the future of endoscopy imaging – together, let's create a benchmark of excellence in medical journalism.

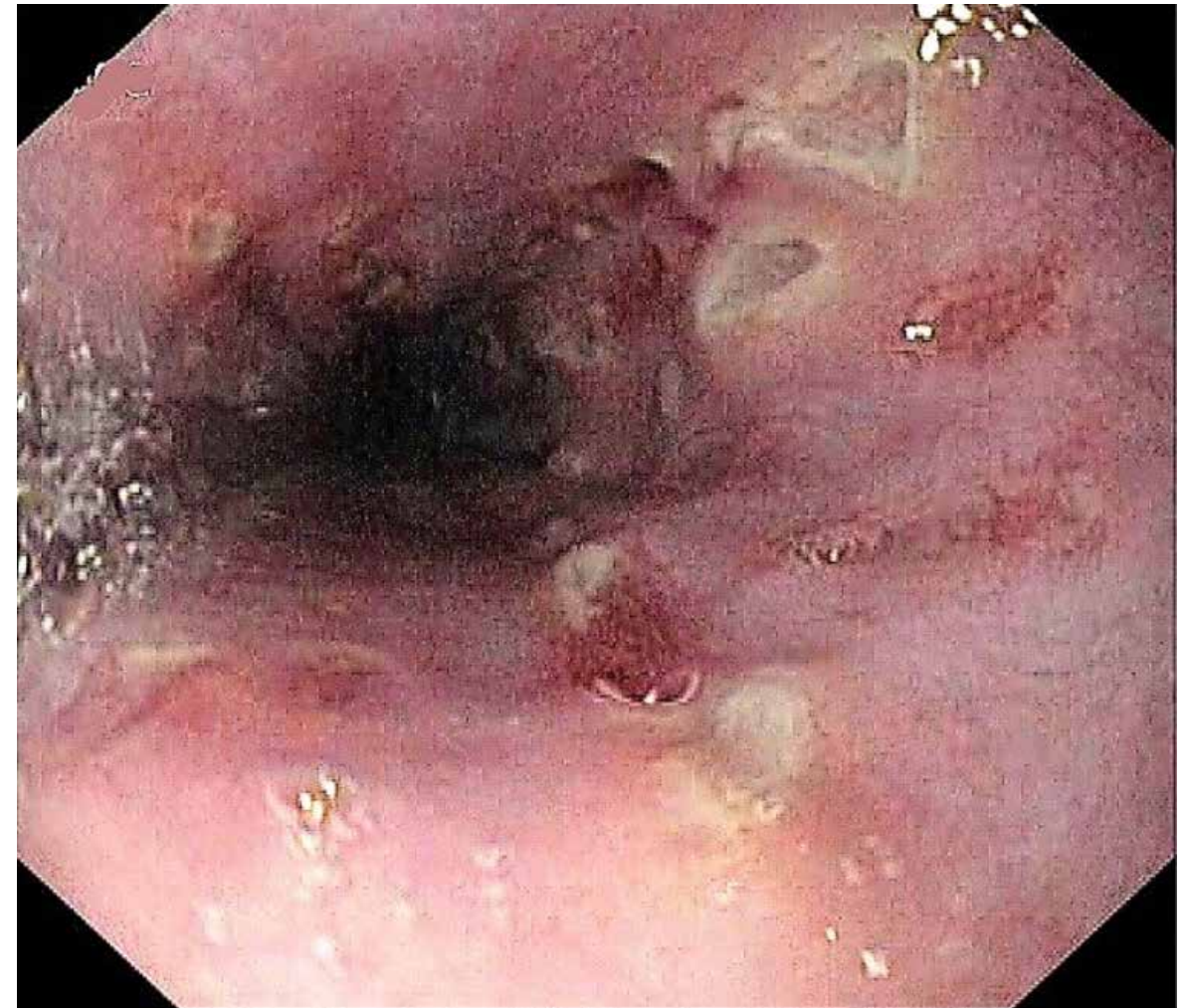
Sincerely,

### Hans Bjorknas

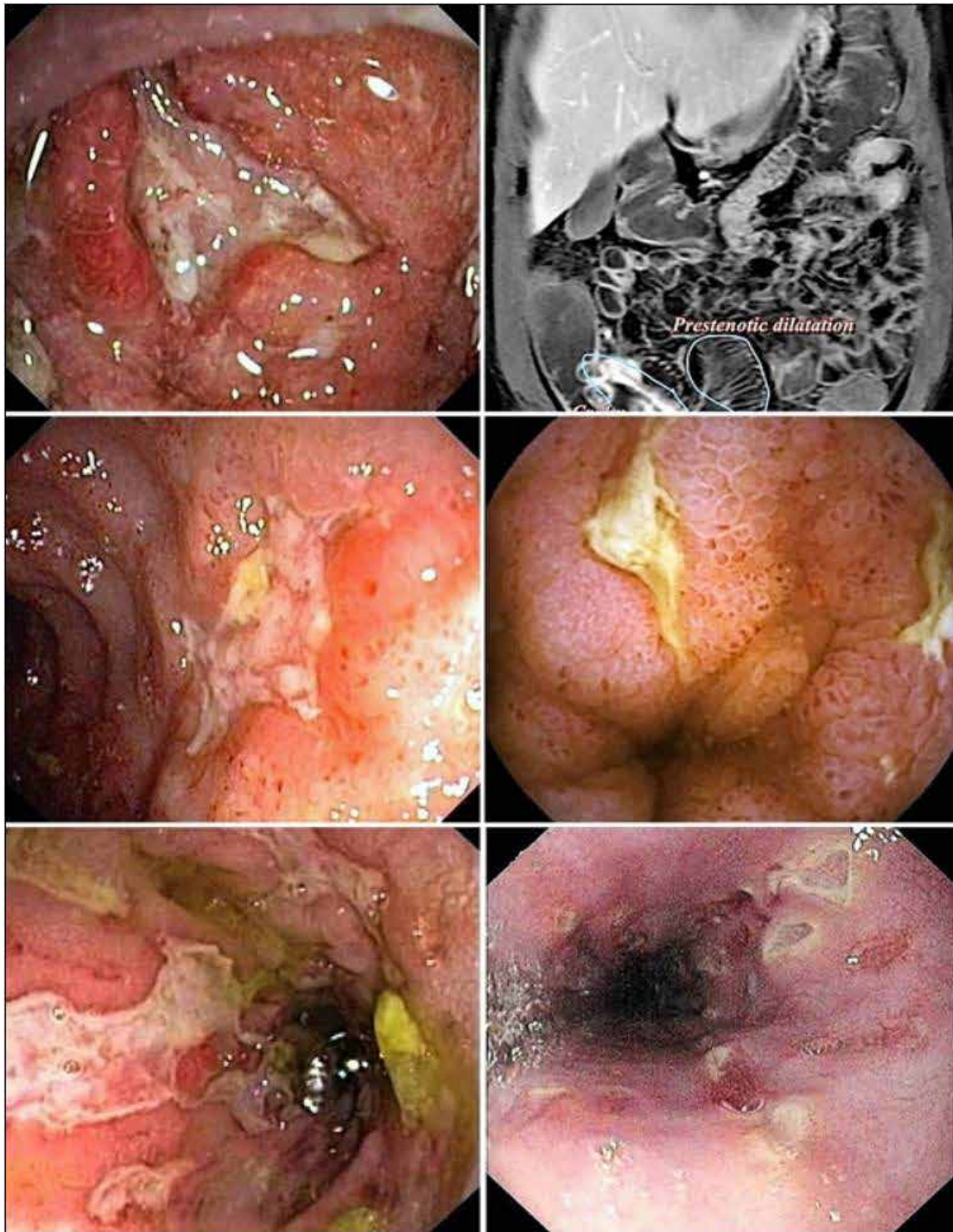
Editor-in-Chief, The GASTROLAB Endoscopy Image Journal

The GASTROLAB JOURNAL  
Koulukatu 37 B 7  
65100 Vaasa  
FINLAND

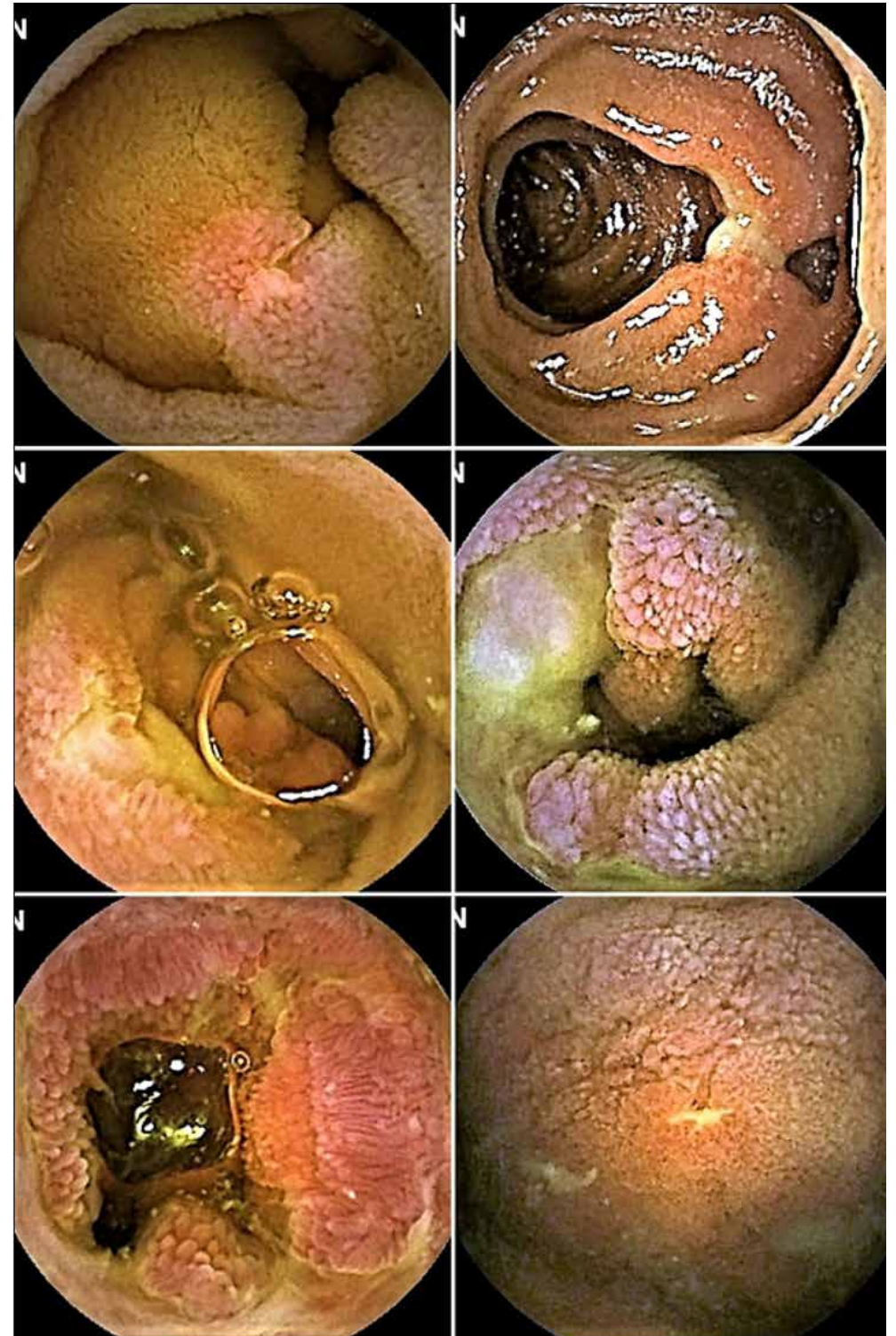
Phone: +358-40-5462455  
Email: [glabinfo@gmail.com](mailto:glabinfo@gmail.com)  
Web: [www.vpress.ovh/journal.htm](http://www.vpress.ovh/journal.htm)  
[www.gastrolab.net](http://www.gastrolab.net)



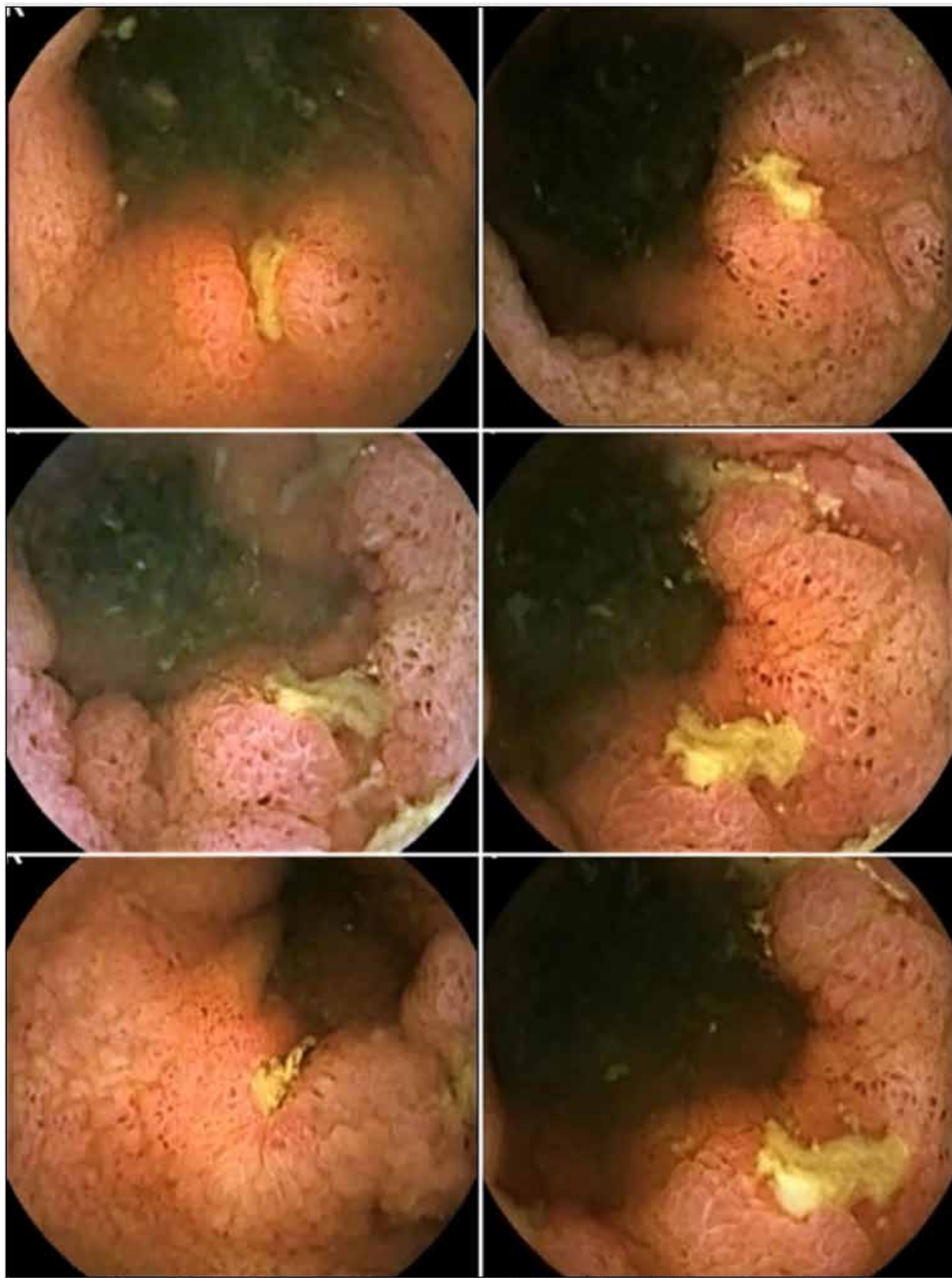
*Oesophageal Crohn 's Disease*



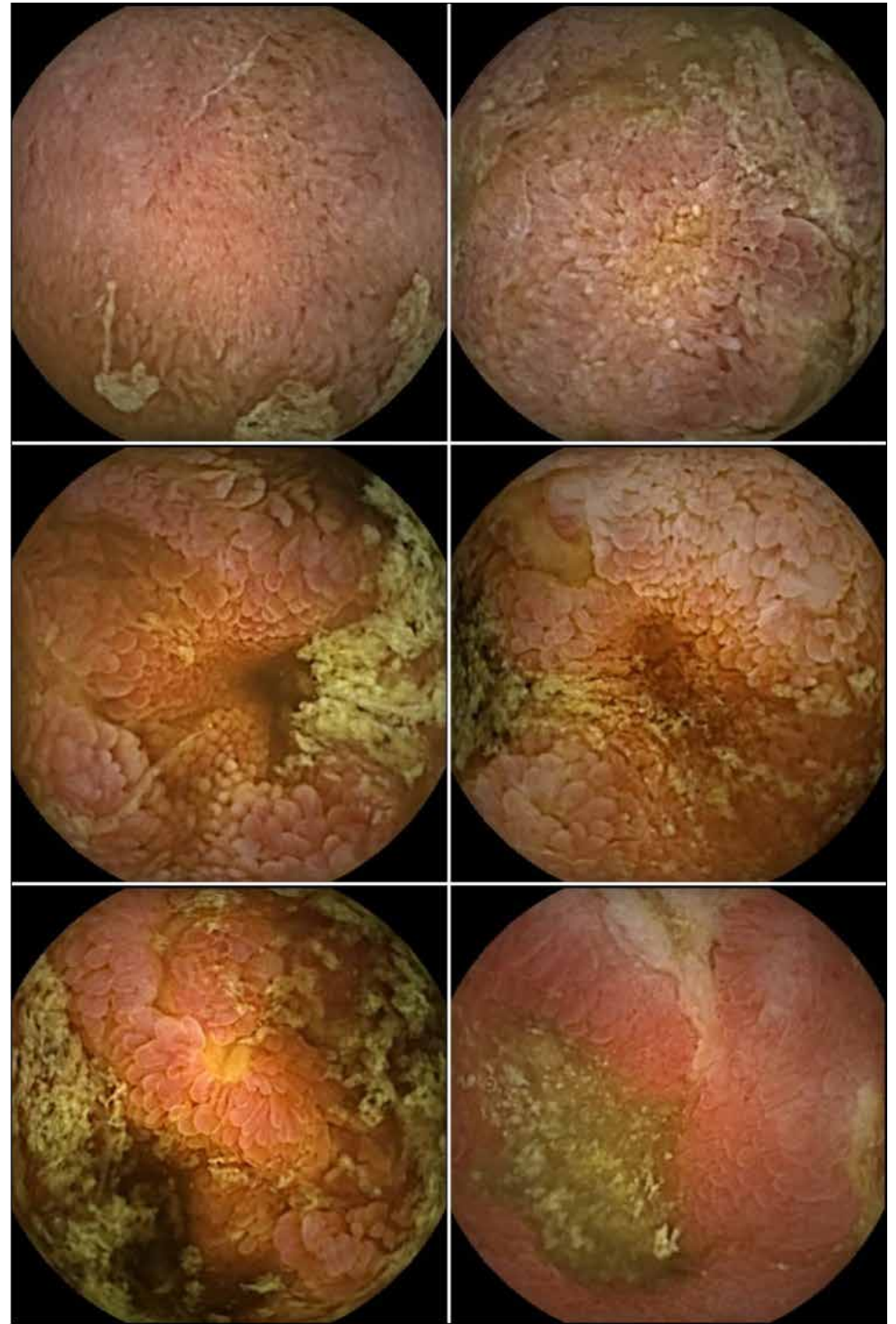
Collage: Crohns Disease



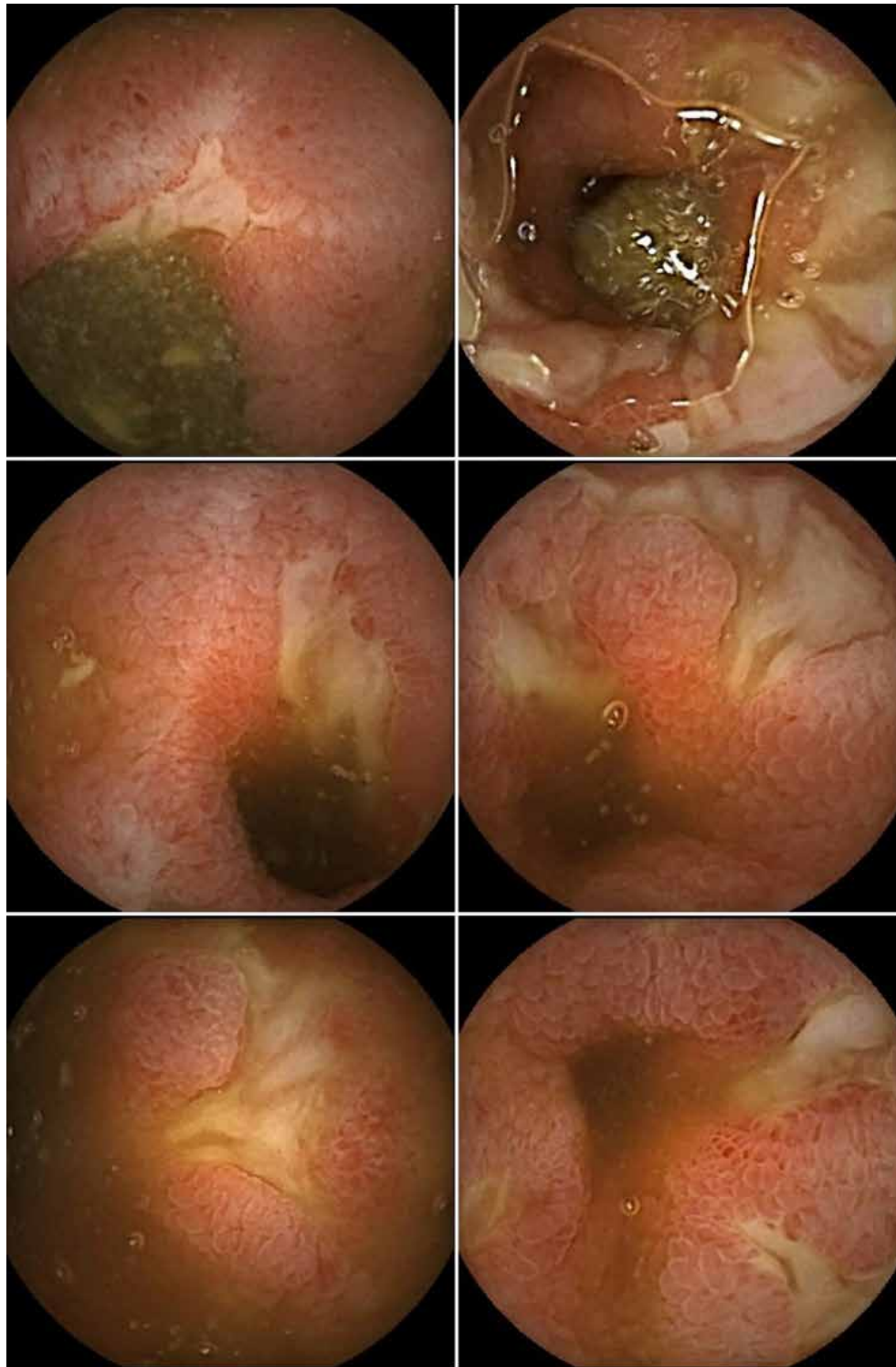
Collage: Crohns Disease in the Small Bowel (Capsule-endoscopy)



Collage: Crohns Disease: Ulcerations in the Small Bowel (Capsule-endoscopy)



Collage: Crohns Disease in the Small Bowel (Capsule-endoscopy)



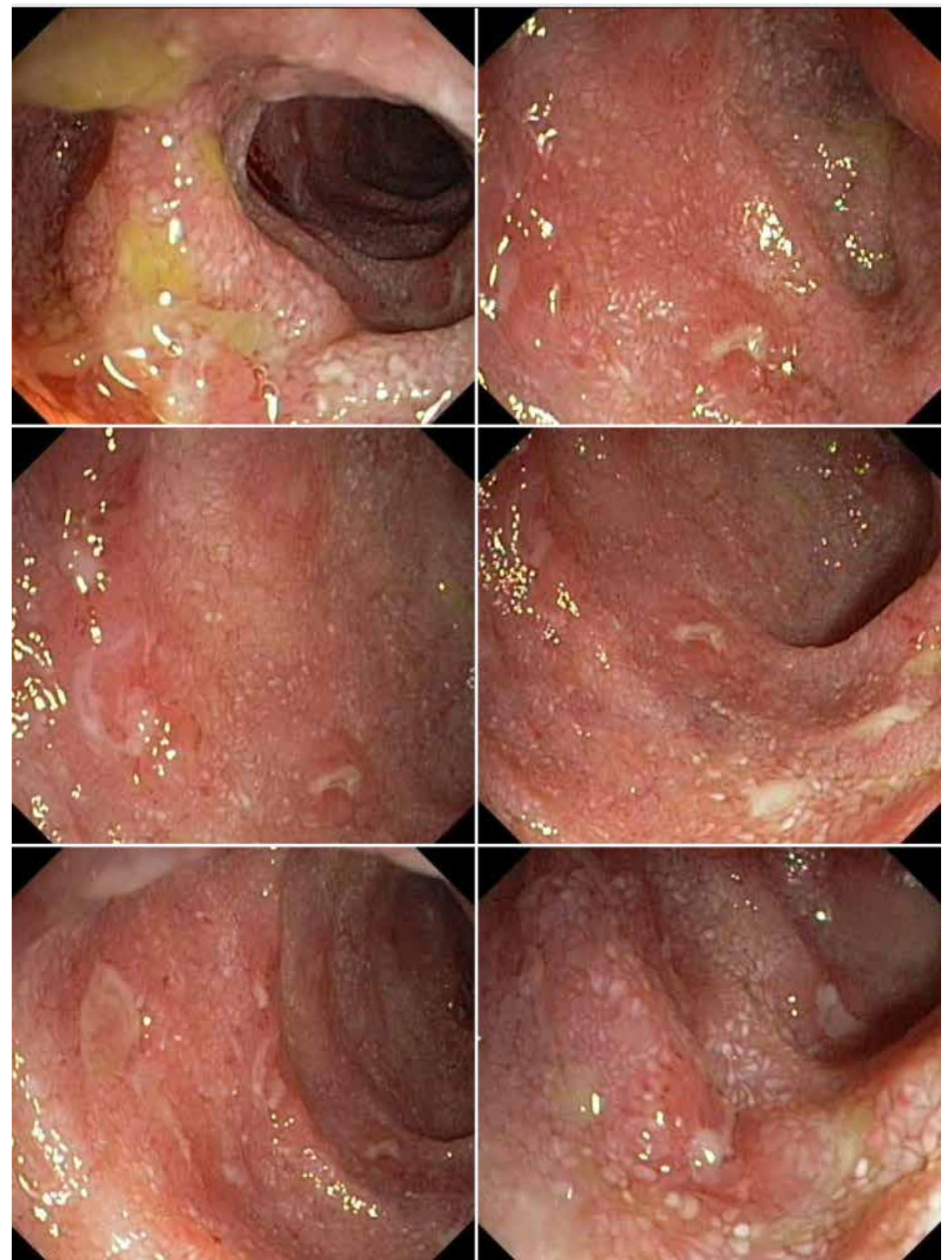
Collage: Crohns Disease in the Small Bowel (Capsule-endoscopy)



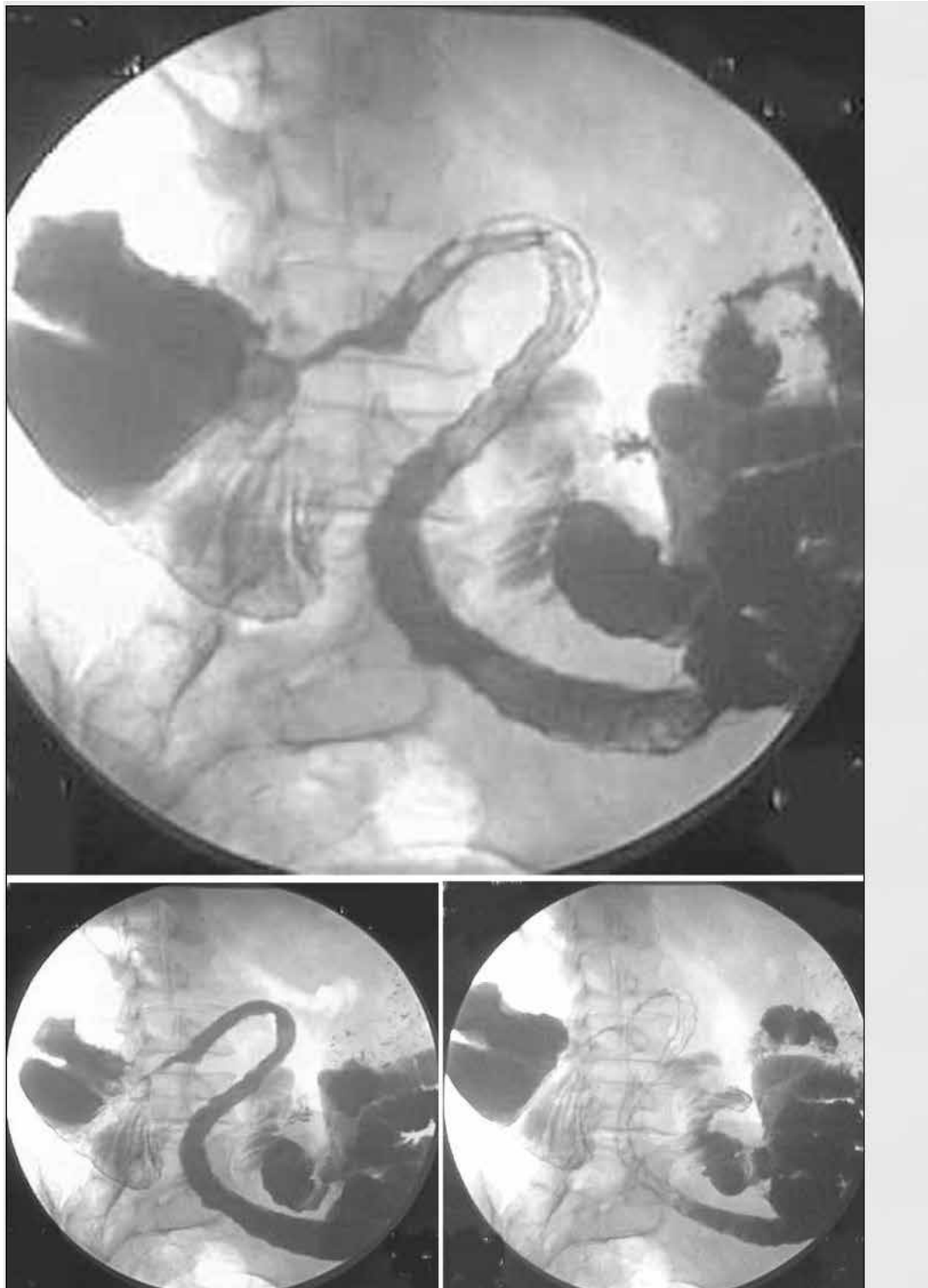
Collage: Stricture caused by Crohns Disease in the Small Bowel (Capsule-endoscopy)



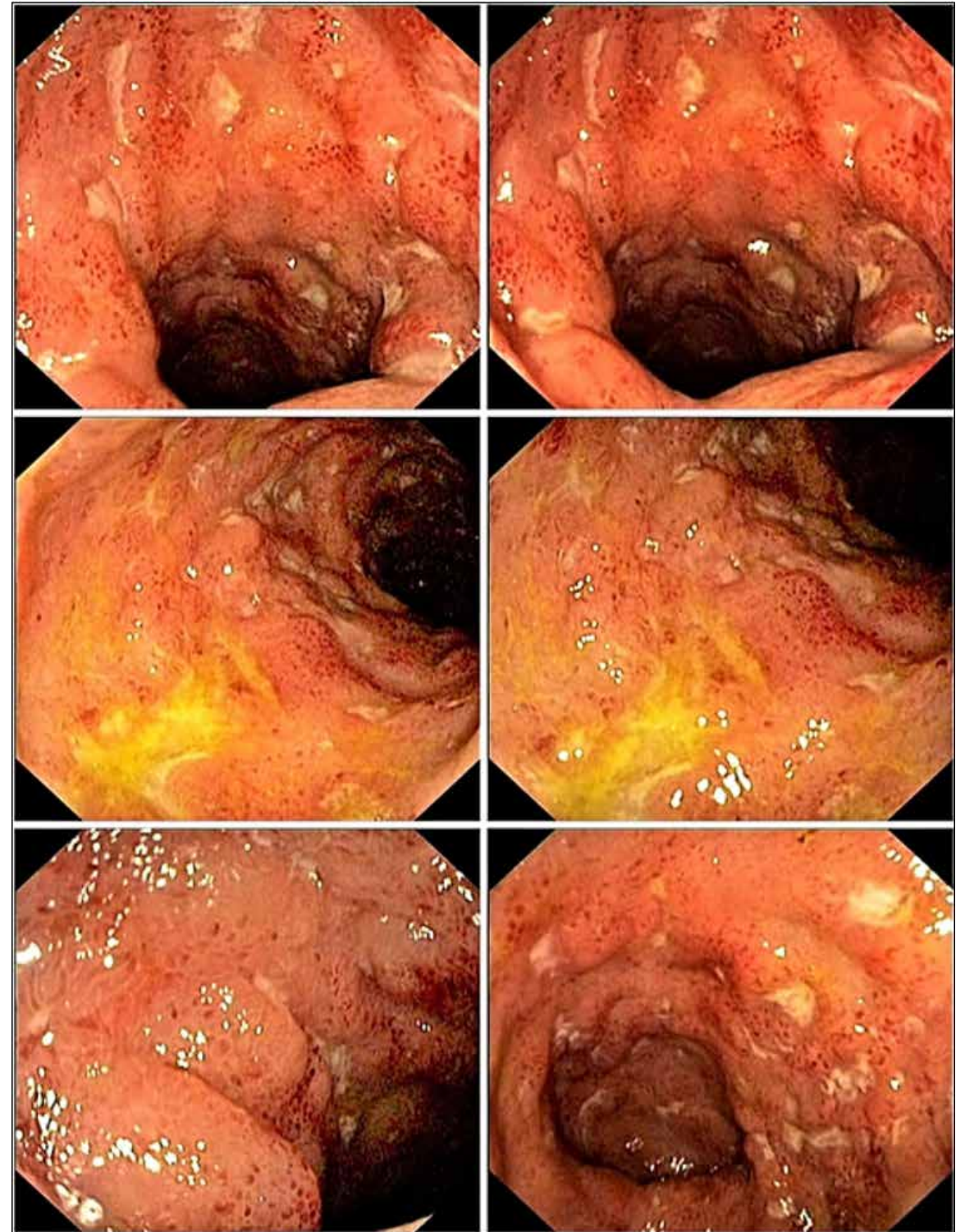
Collage: Crohns Disease in the Small Bowel (Capsule-endoscopy)



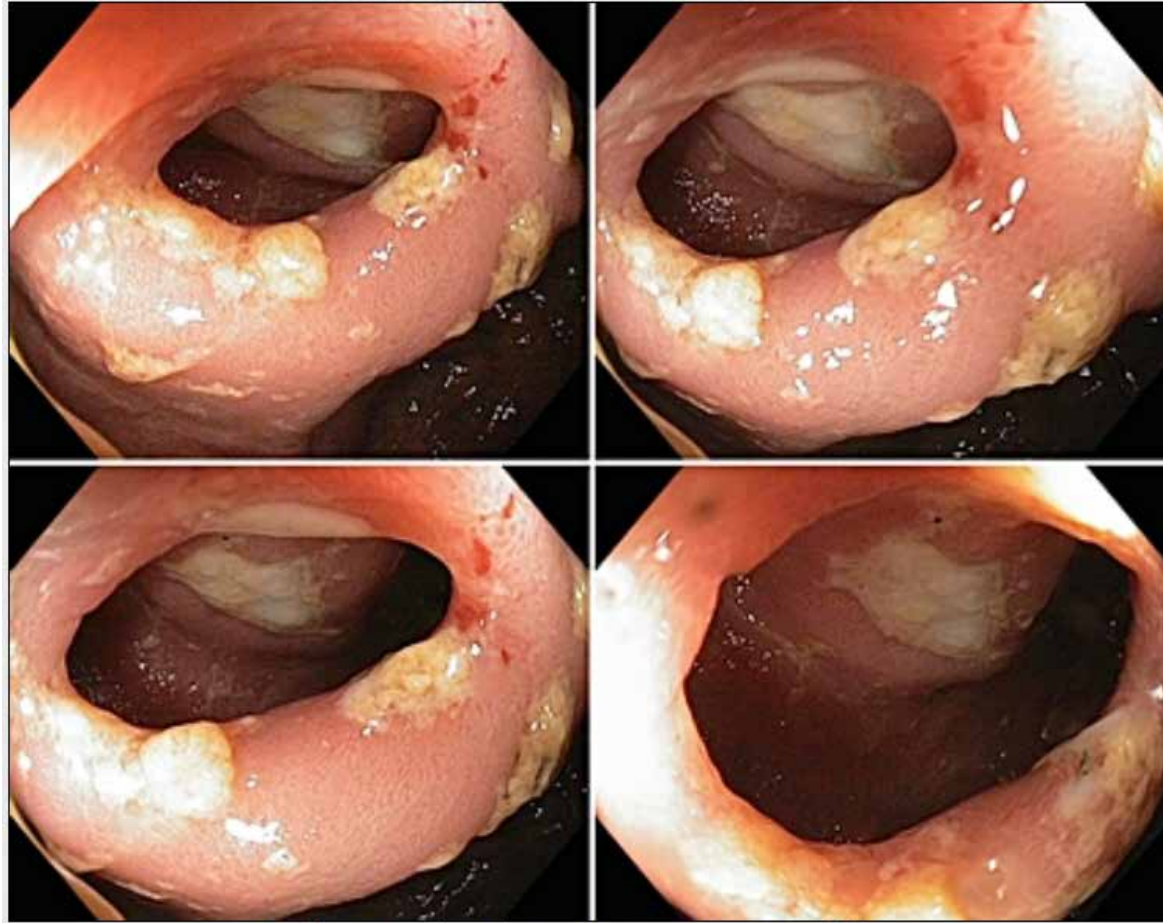
Collage: Crohns disease in the terminal ileum



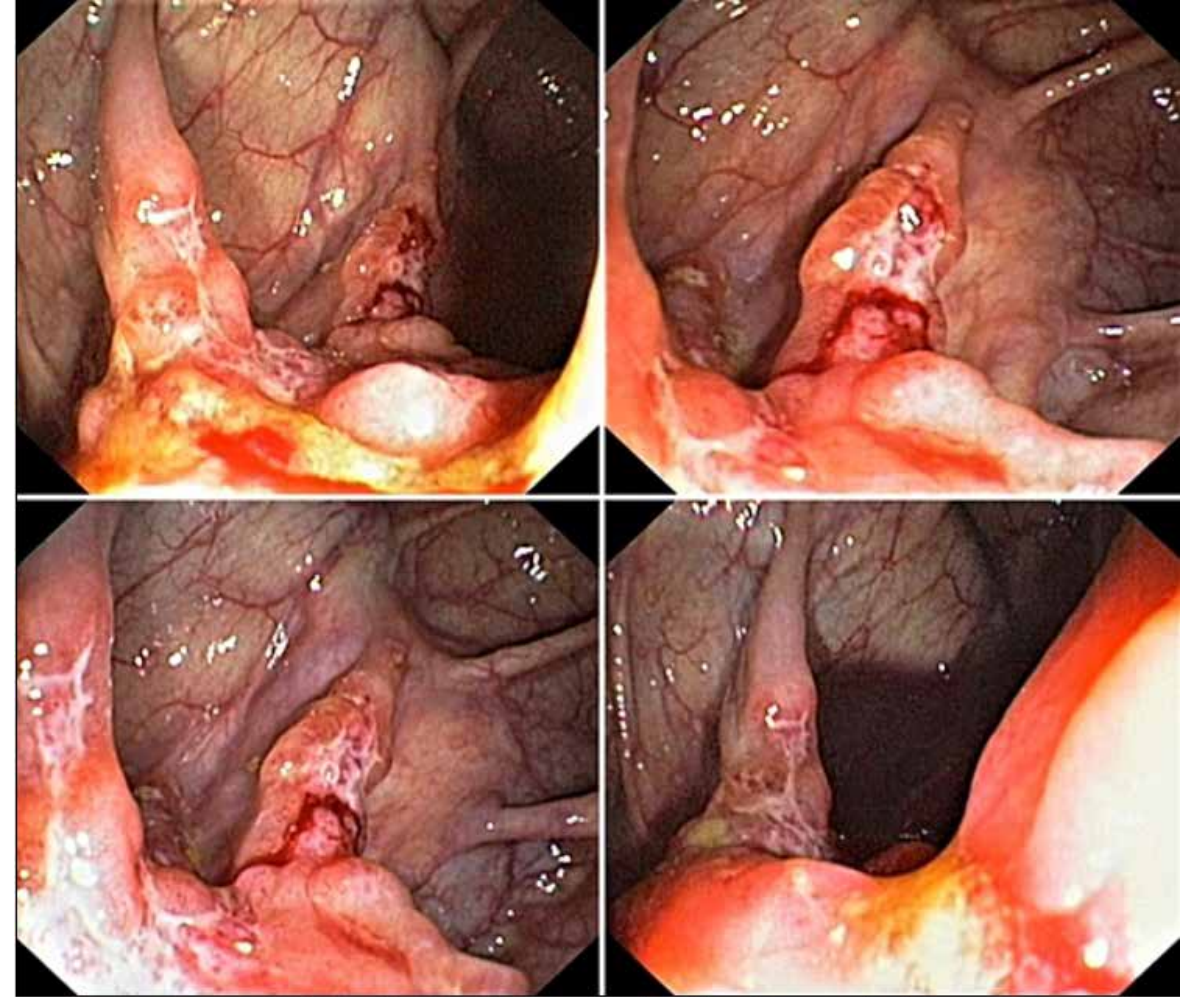
: A long segment of the distal ileum affected by Crohn's disease in a patient astonishingly symptomfree



Collage: Crohn's disease in the terminal ileum

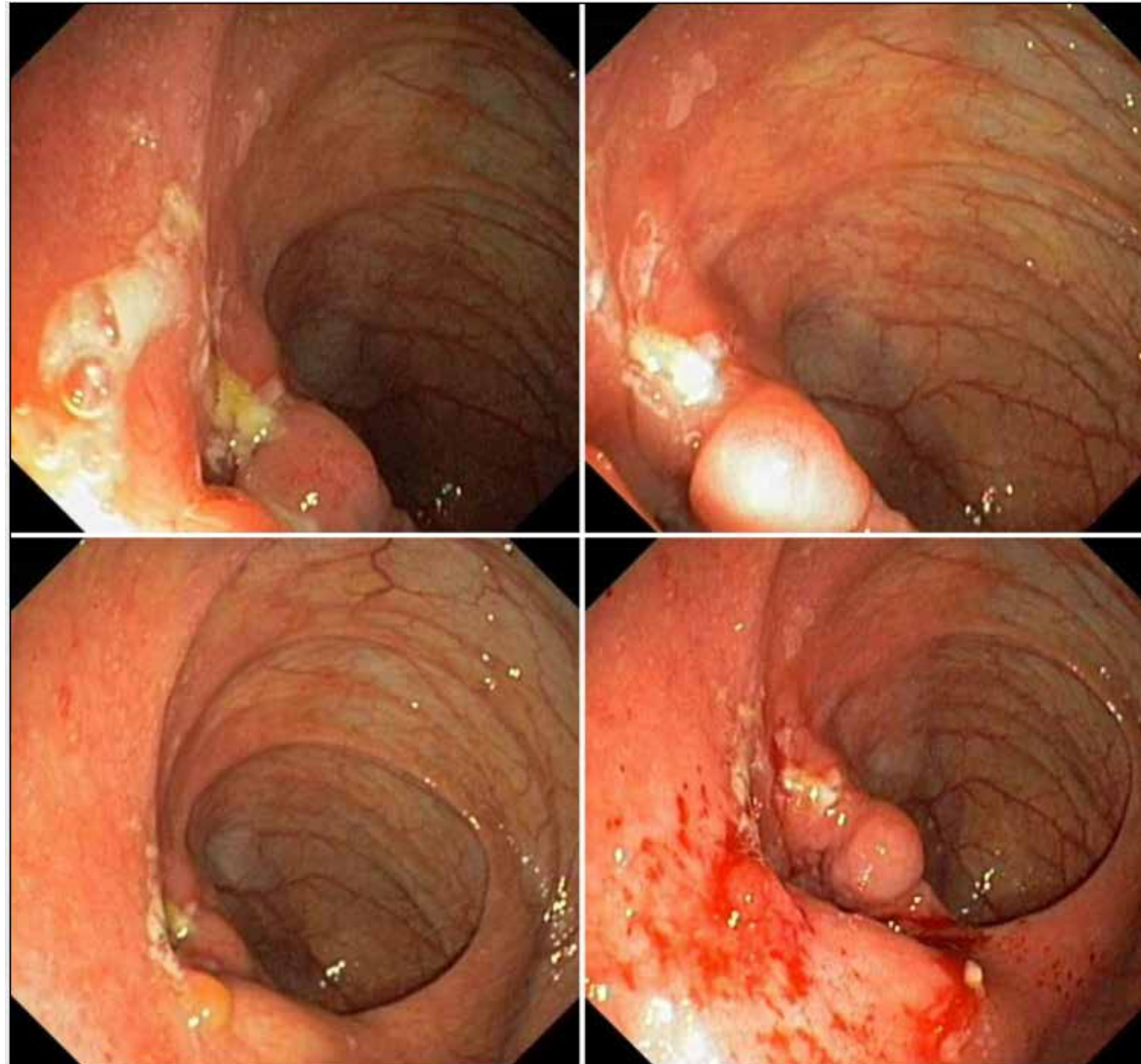


Collage: Crohns ulceration in a neo-terminal ileum

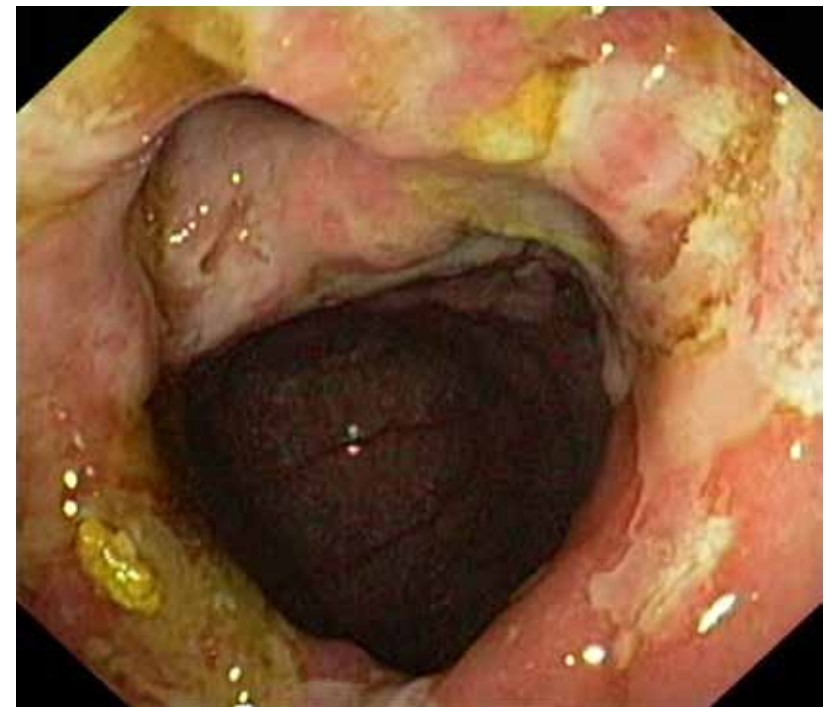
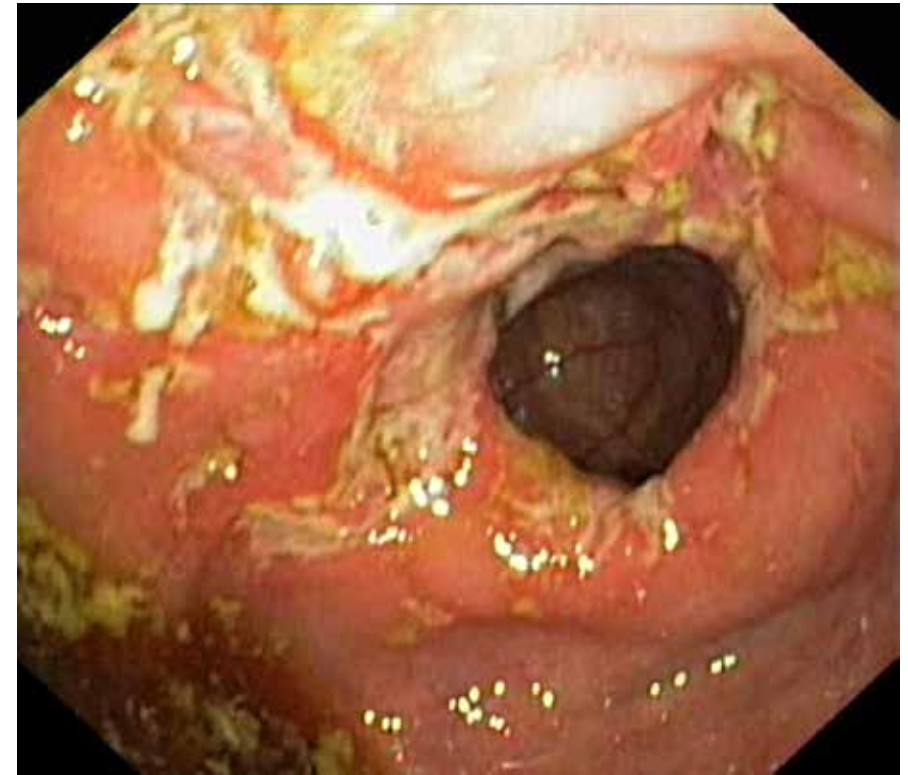


Collage: Crohns disease affecting the ileocaecal valve

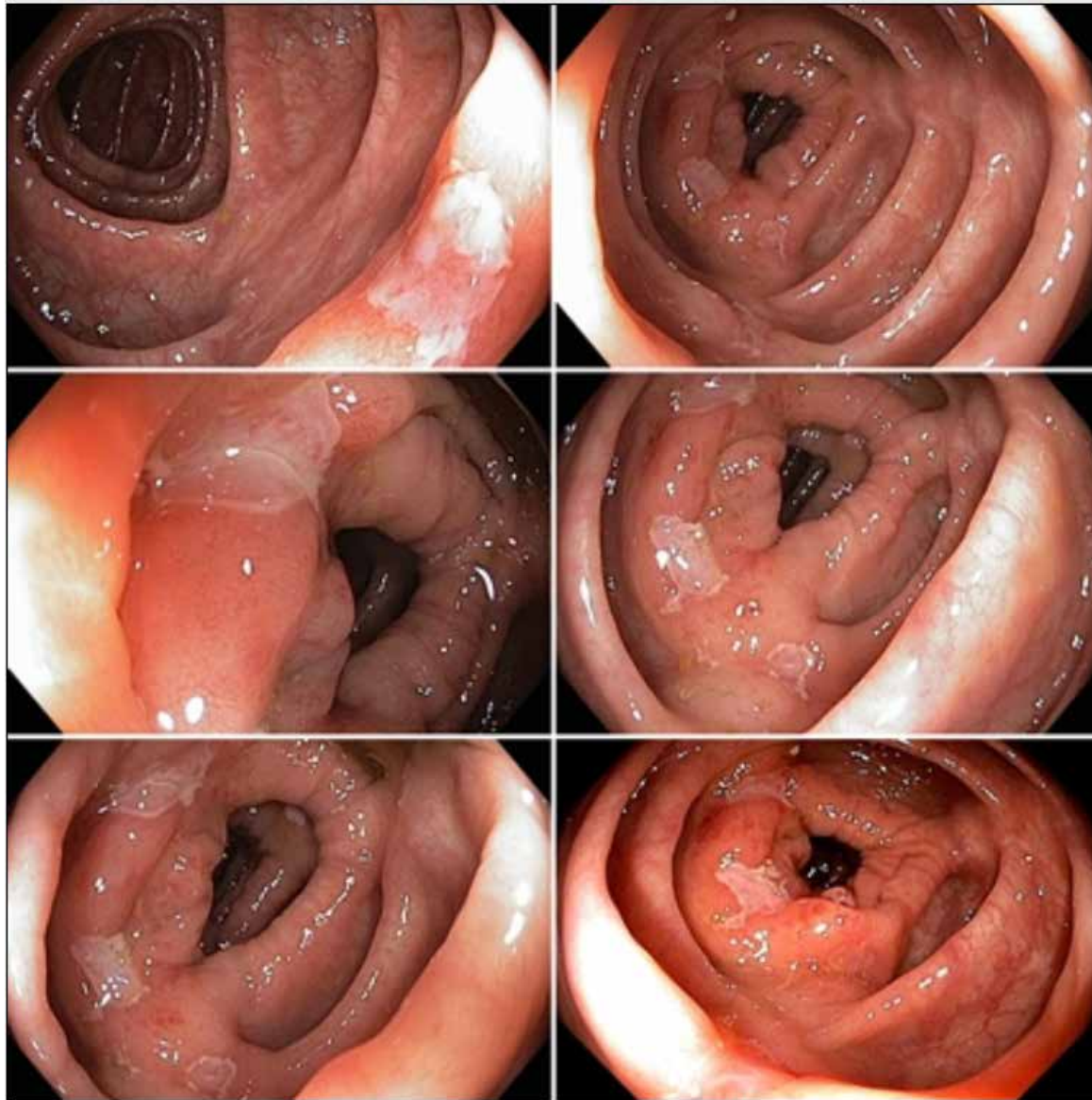




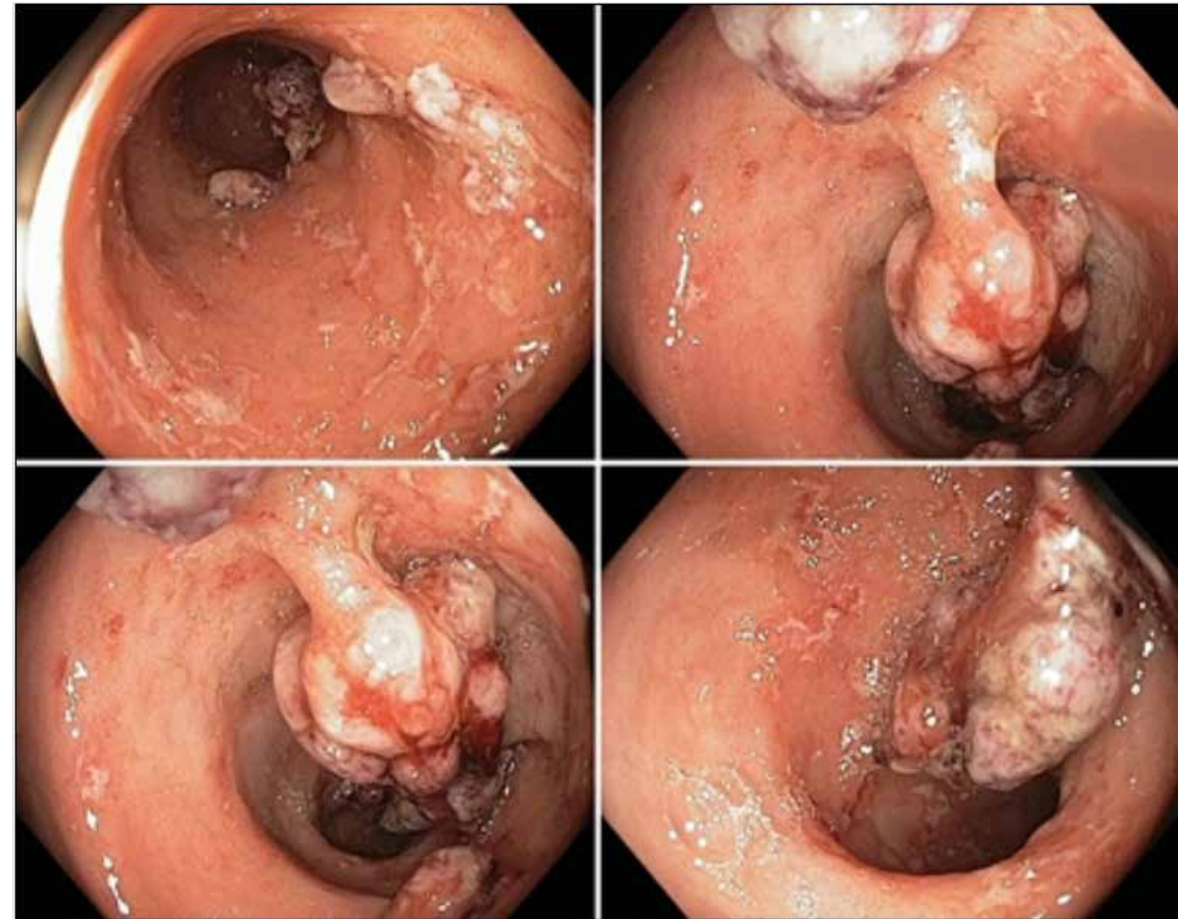
*Collage: Crohns disease affecting the ileocaecal valve*



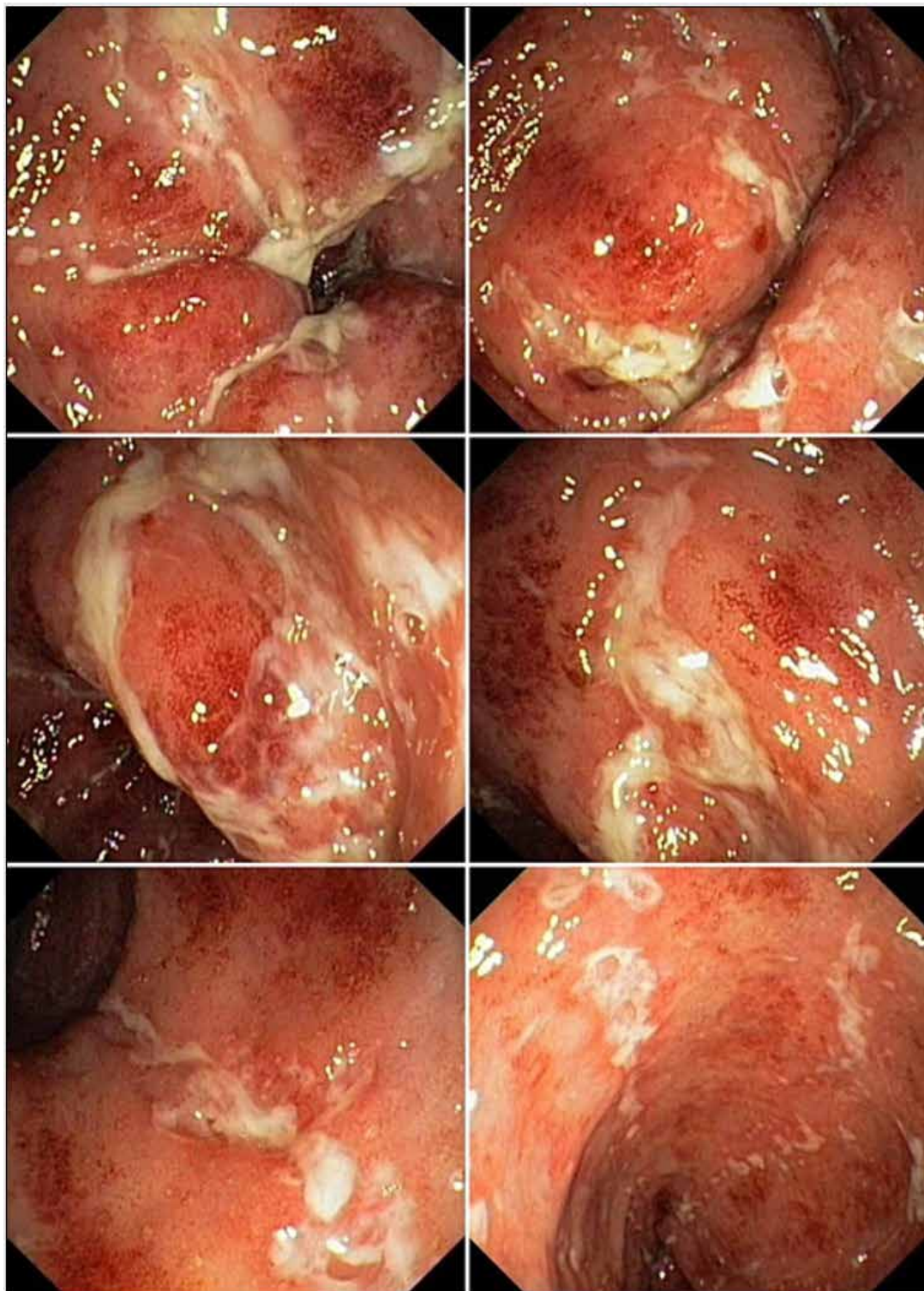
*Ileocaecal Crohn's Disease*



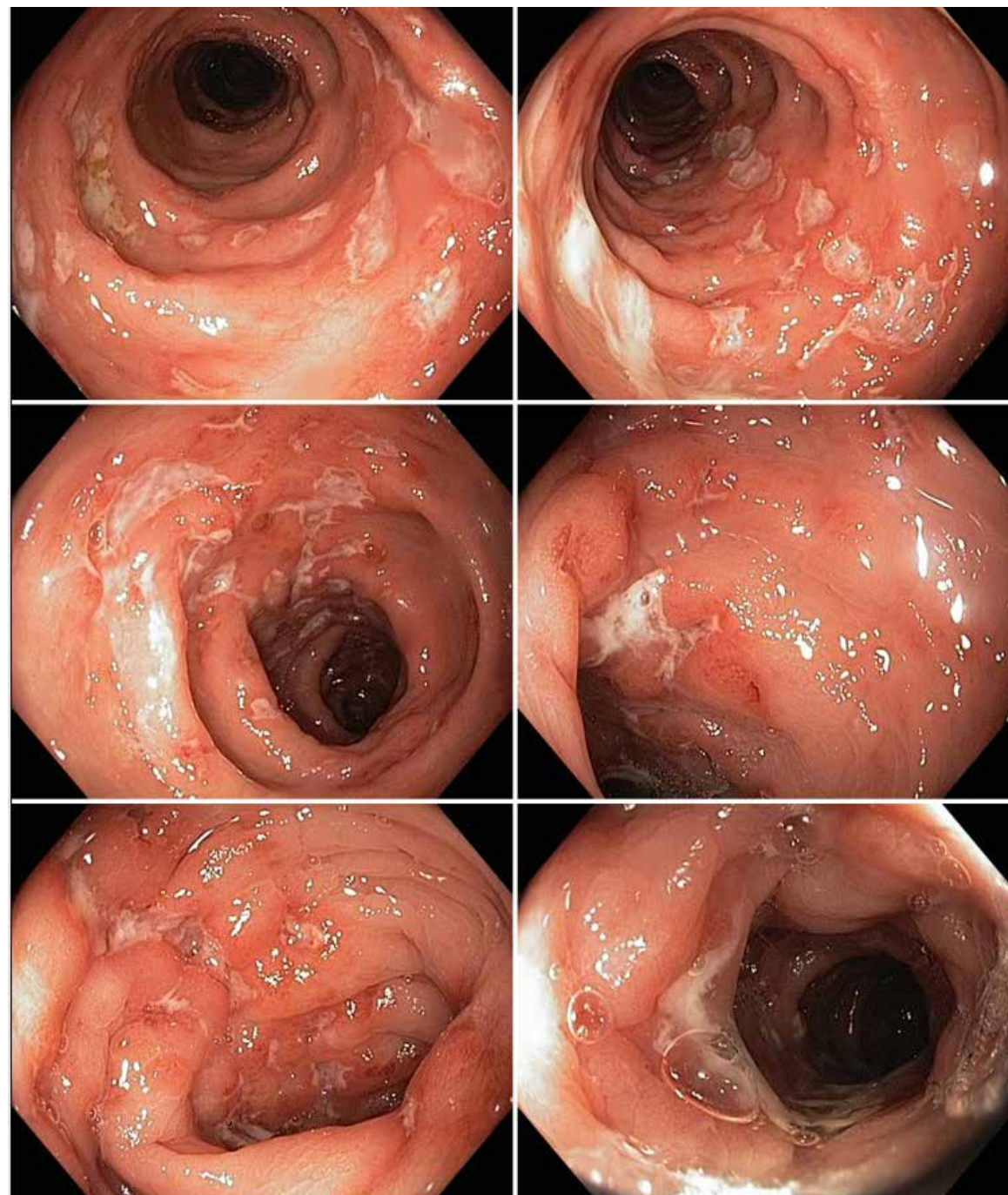
Collage: Crohns disease, ulcerations in the colon



Collage: IBD, probably Crohns disease: Inflammatory Polyps in the Transverse Colon



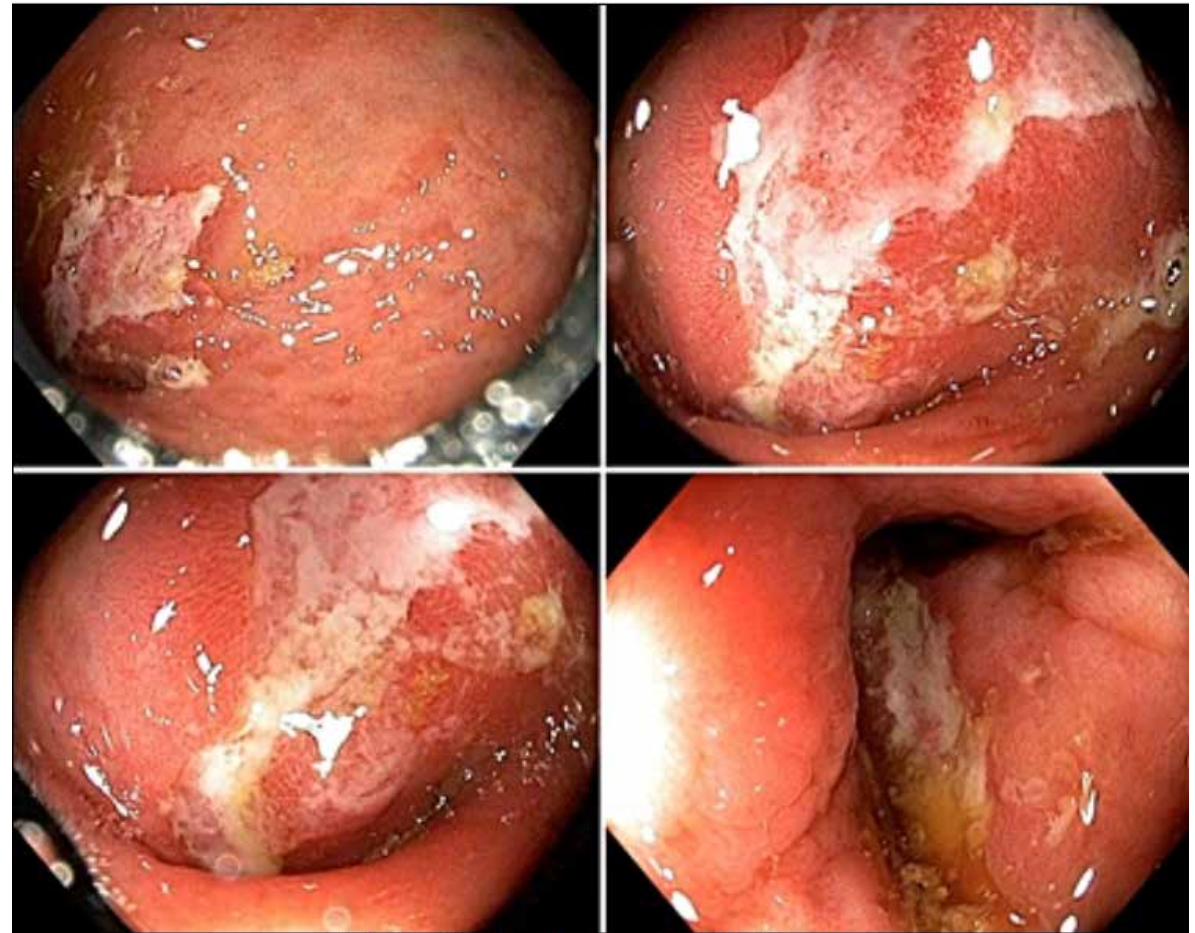
Collage: Severe Crohns disease in the transverse colon



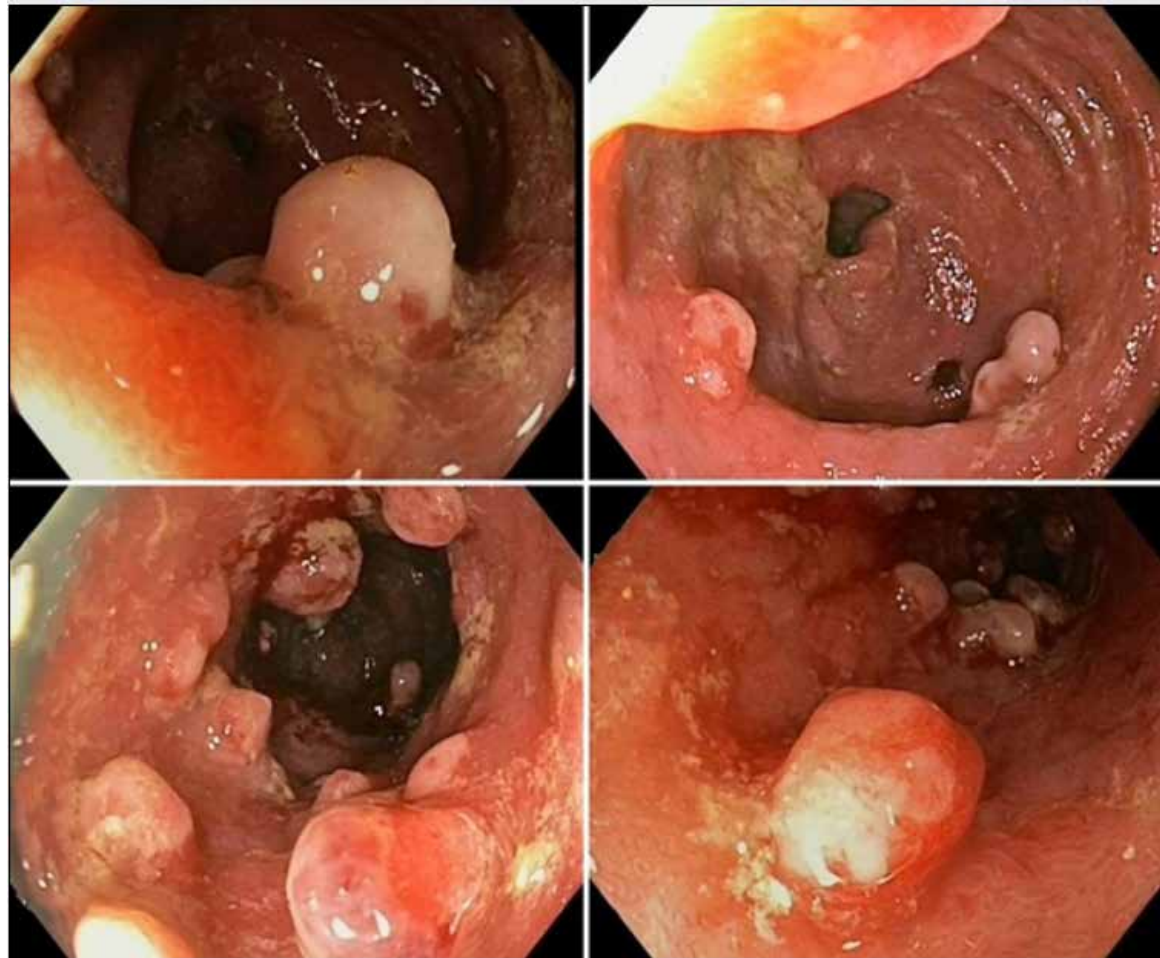
Collage: Crohns disease in the distal colon



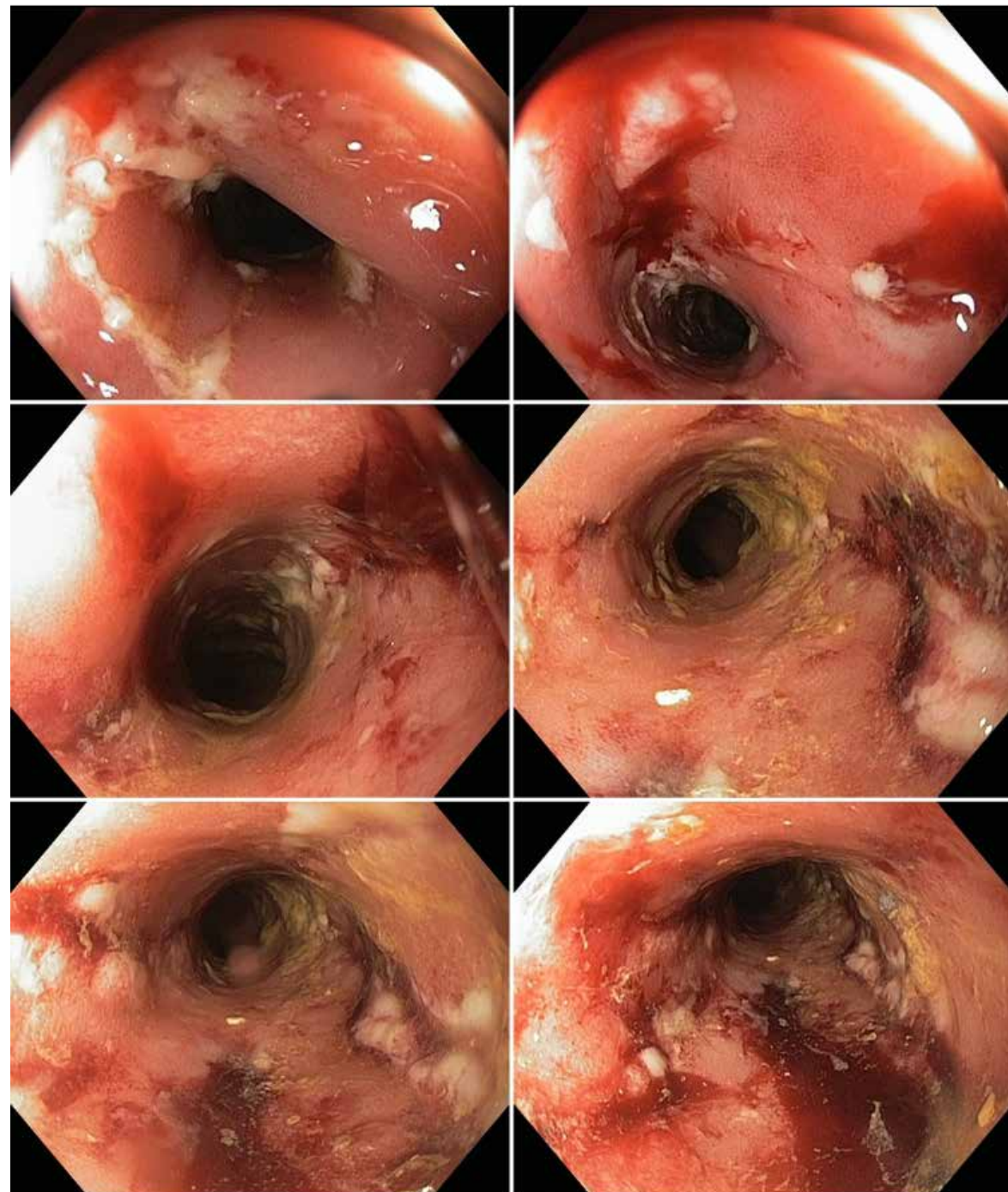
*Crohn's Disease: Deep ulcers in the sigmoid colon*



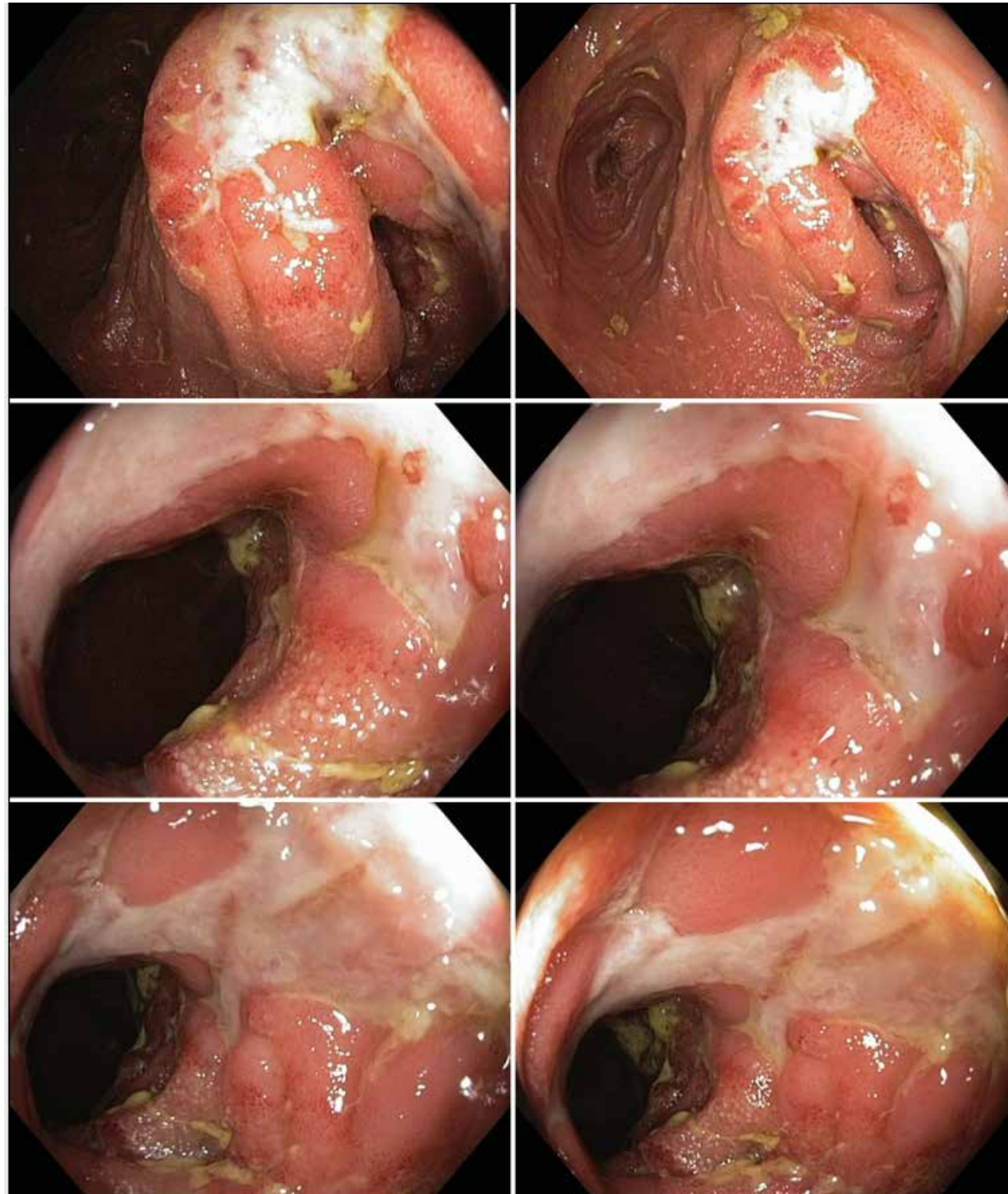
*Collage: Crohns disease: Rectal ulcerations*



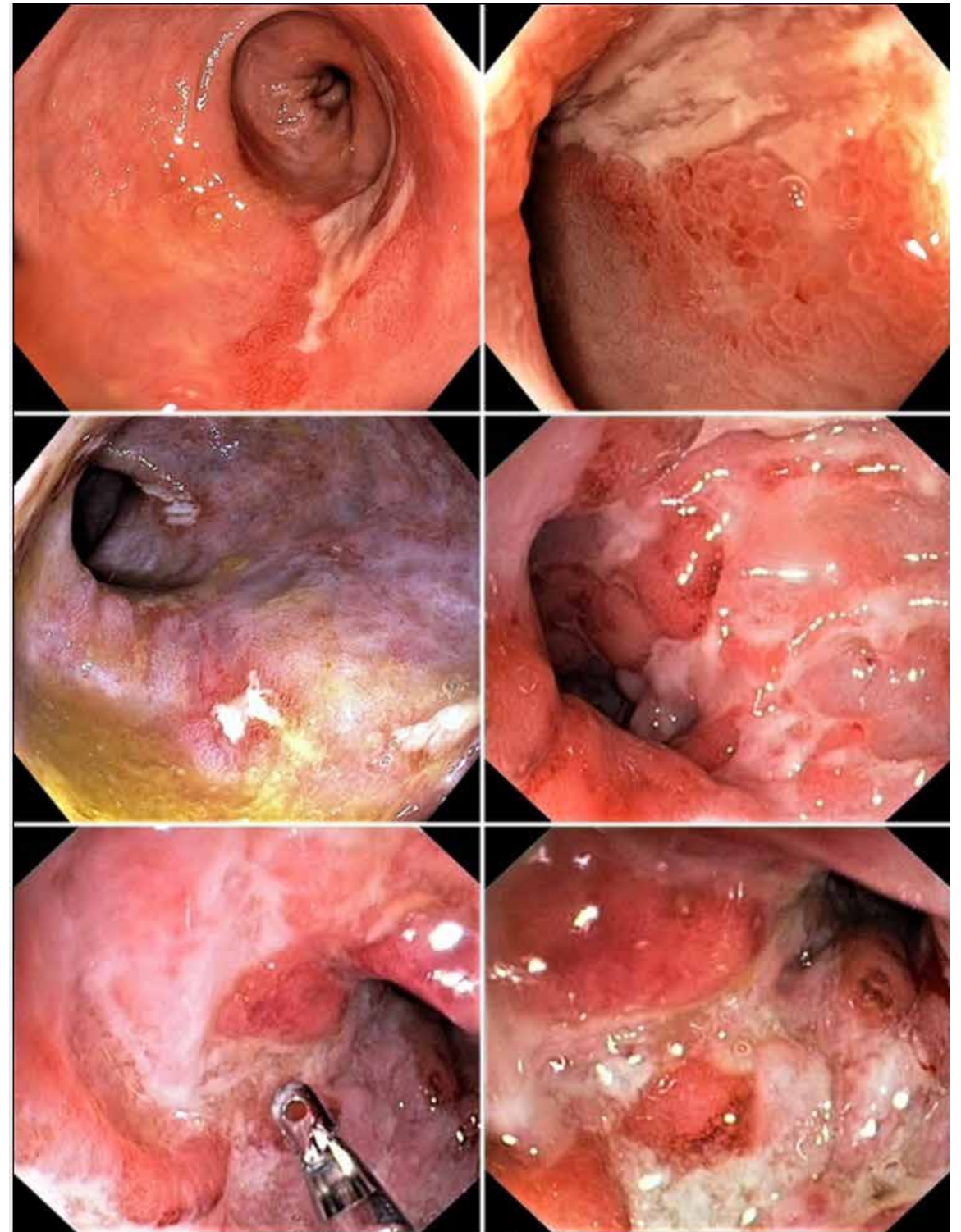
Collage: Crohns disease: Rectal inflammatory polyps



Collage: Crohns disease: Rectal stricture



Collage: Crohns disease: Recurrent Crohn after ileorectal anastomosis



Collage: Severe rectal Crohns disease



*Colon cancer caused by Crohn's Disease*