

Maasan Päivälehti

Photo Supplement

Wasa Dagblad

Wasa Daily

A woman with long brown hair, wearing a white short-sleeved top and a dark skirt, stands on a rocky outcrop. She holds a large Finnish flag (white with a blue cross) aloft with her right arm and a wooden pole with her left. The background shows a landscape with a body of water, distant hills, and evergreen trees. The sky is bright and hazy.

Finlandia-näyttely
Finlandia-utställningen
The Finlandia Exhibition



EXHIBITION

FINLANDIAHOUSE

Finlandia Exhibition – A new permanent Finnish exhibition opens the doors to history and architecture



A new, permanent exhibition has opened in the heart of Helsinki, on the shores of Töölönlahti Bay, which offers an in-depth and visually stunning deep dive into the heart of Finnish history.

The Finlandia exhibition, which opened its doors at Finlandia Hall on 4 June, is much more than just a collection of objects – it is an eventful journey to the roots of the creative genius of Alvar, Aino and Elissa Aalto and to important moments in Finland's history.

Finlandia Hall, designed by Alvar Aalto, is an architectural masterpiece in its own right, and now it serves as the perfect stage for this celebration of both Aalto's life's work and Finland's independent path. The exhibition is constantly open, making it an accessible destination for both local and international visitors. Its scale and visual execution make it a

truly memorable experience.

The magic of Aalto and the echo of history

The exhibition provides a fascinating picture of the icon of modern architecture, Alvar Aalto, and his unique craftsmanship. Aalto's design philosophy, which combines organic forms and functionality, is explored in many different ways in the exhibition. But it's not just about architecture; The exhibition takes visitors on a journey through Finland's rich history and Finlandia Hall's significance in the international arena.

One of the most impressive parts of the exhibition is the room dedicated to the 1975 CSCE meeting. It was in this building that the "Helsinki Spirit" was created, an attempt at détente and cooperation during the years of the Cold War. Although the zeitgeist may not be as relevant in today's world, the historical weight of the moment is palpable. It is impressive to see how world leaders such as Soviet President Leonid Brezhnev and US President



Gerald Ford have gathered in the same building and shaped history.

The walking experience is further deepened by the first room of the exhibition, where Sibelius's iconic Finlandia hymn is played. The music, combined with the visual story, creates a powerful sense of national pride and heritage.

An international attraction and a favourite among schoolchildren

The exhibition will undoubtedly be a popular destination for both foreign tourists and domestic visitors. Meeting the Argentine couple at the show confirmed this international appeal. They told us that Alvar Aalto is an essential part of the basic education of architecture studies in Argentina. This demonstrates Aalto's universal significance and the exhibition's ability to reach audiences globally.

In Finland, the Finlandia exhibition has the potential to become a regular event on school trips. It offers a wonderful overview of Finland, its history and significant

people in a way that is both educational and deeply experiential. It would be highly recommended for every Finnish citizen to visit this unique exhibition once – it gives a deeper understanding of our country and its soul.

Information to the visitor

The Finlandia exhibition is open as follows:

Mondays and Tuesdays from 9 a.m. to 7 p.m.

Wednesday to Saturday from 9 a.m. to 8 p.m.

Sundays from 11 a.m. to 6 p.m.

The exhibition is part of a larger new service package at Finlandia Hall, which also includes a terrace-wine café, a design shop and a bistro restaurant.

The Finlandia exhibition is a true tribute to the unique life's work and creativity of Aino, Elissa and Alvar Aalto. It is at the same time a dive into the core of Finnishness and a journey that leaves a mark on every visitor's mind. Don't miss out on this new national treasure!





UTSTÄLLNING

FINLANDIAHUSET

Finlandiautställningen – En ny finländsk basutställning öppnar portarna till historien och arkitekturen



En ny, permanent utställning har öppnats i hjärtat av Helsingfors, vid stranden av Tölöviken, som ger en djuplodande och visuellt fantastisk djupdykning in i hjärtat av finländskheten.

Finlandia-utställningen, som öppnade sina dörrar i Finlandiahuset den 4 juni, är mycket mer än bara en samling föremål – den är en upplevelserik resa till rötterna till Alvars, Ainos och Elissa Aaltos kreativa geni och till viktiga ögonblick i Finlands historia.

Finlandiahuset, ritat av Alvar Aalto, är ett arkitektoniskt mästerverk i sig, och nu fungerar det som den perfekta scenen för denna hyllning till både Aaltos livsverk och Finlands självständiga väg. Utställningen är ständigt öppen, vilket gör den till ett lättillgängligt resmål för

både lokala och internationella besökare. Dess omfattning och visuella utförande gör det till en verkligt minnesvärd upplevelse.

Aaltos magi och historiens eko

Utställningen ger en fascinerande bild av den moderna arkitekturens ikon Alvar Aalto och hans unika hantverk. Aaltos designfilosofi, som kombinerar organiska former och funktionalitet, utforskas på många olika sätt i utställningen. Men det handlar inte bara om arkitektur; Utställningen tar besökaren med på en resa genom Finlands rika historia och Finlandiahusets betydelse på den internationella arenan.

En av de mest imponerande delarna av utställningen är det rum som är tillägnat KSSE-mötet 1975. Det var i denna byggnad som "Helsingforsandan" skapades, ett försök till avspänning och samarbete under det kalla krigets år. Även om tidsandan kanske inte är lika relevant i dagens värld, är den historiska tyngden i ögonblicket påtaglig. Det är imponerande att se hur världsledare



som Sovjetunionens president Leonid Brezjnev och USA:s president Gerald Ford har samlats i samma byggnad och format historien.

Promenadupplevelsen fördjupas ytterligare av utställningens första rum, där Sibelius ikoniska Finlandia-hymn spelas. Musiken, i kombination med den visuella berättelsen, skapar en stark känsla av nationell stolthet och arv.

En internationell attraktion och en favorit för skolbarn

Utställningen kommer utan tvekan att bli ett populärt resmål för både utländska turister och inhemska besökare. Mötet med det argentinska paret på mässan bekräftade denna internationella dragningskraft. De berättade att Alvar Aalto är en väsentlig del av grundutbildningen i arkitekturstudier i Argentina. Detta visar på Aaltos universella betydelse och utställningens förmåga att nå ut till en global publik.

I Finland har Finlandia-utställningen potential att bli ett återkom-

mande evenemang på skolresor. Den ger en fantastisk överblick över Finland, dess historia och betydelsefulla personer på ett sätt som är både lärorikt och djupt erfarenhetsbaserat. Det skulle varmt rekommendera alla finländare att besöka denna unika utställning en gång – den ger en djupare förståelse för vårt land och dess själ.

Information till besökaren

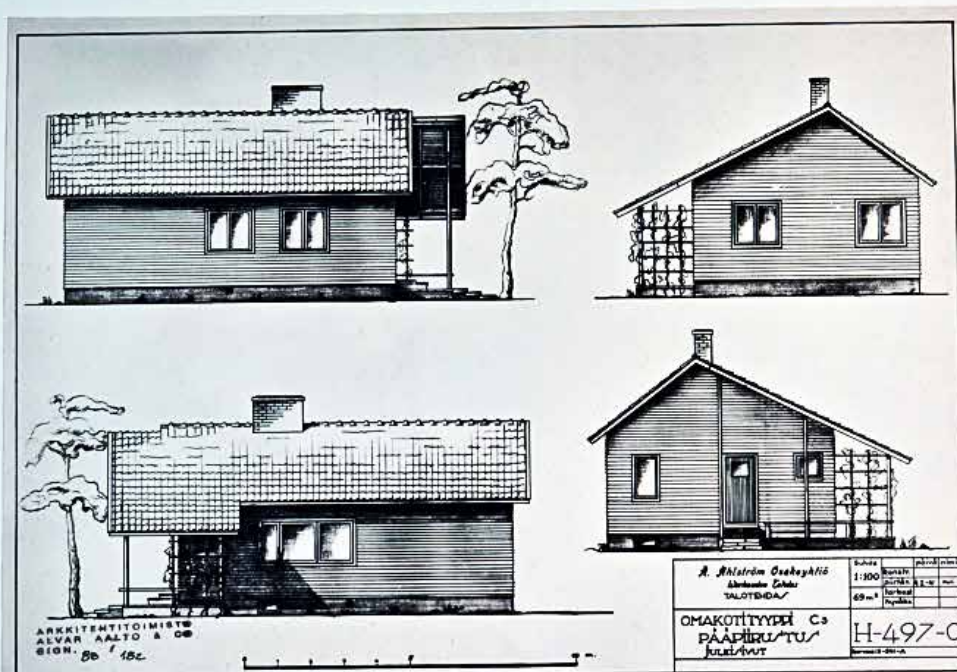
Finlandia-utställningen är öppen
Måndagar och tisdagar kl. 9-19
Onsdag till lördag från 9 till 18
Söndagar kl. 11-18

Utställningen är en del av ett större nytt servicepaket i Finlandiahuset, som också omfattar ett terrass-vincafé, en designbutik och en bistrorestaurang.

Finlandia-utställningen är en sann hyllning till Aino, Elissa och Alvar Aaltos unika livsverk och kreativitet. Det är på samma gång en djupdykning i finländskhetens kärna och en resa som lämnar ett avtryck i varje besökares sinne. Missa inte denna nya nationalskatt!



HUOKEITA TALOJA KAIKILLE AFFORDABLE HOMES FOR ALL



WASA DAILY
Nr 23 Sunday, June 8, 2025
ISSN 2965-2456
The year of the City Theatre
Korsholm cheapest in Finland
Prostate Cancer
Inkeri Julkunen
A new era in weight loss
A New Dwarf Planet

WASA
DAILY

Wasa Daily



Welcome to a new era of newspapers! Say hello to **Wasa Daily** - the smart news source that you can read anywhere and that keeps you well-orientated.

So, what exactly is **Wasa Daily**? Well, it's your weekly dose of news, information, laughter, insight and everything else that makes life a little wiser, and more fun. And the best of all? Its free! Exactly, you read that right. No hidden fees, no subscriptions. We believe news should be accessible to everyone, whether you're on a beach in Thailand or in your favorite cafe around the corner. So how does it work? Easy! Just download our **Wasa Daily** to your tablet, and you have the whole world in your hand.

We at **Wasa Daily** know that Finns love their coffee. Every Sunday morning you can enjoy your favorite coffee and at the same time update yourself on world events. So take out the coffee cup, sit comfortably and read the **Wasa Daily**.

In a world full of boring news, someone like us is needed to spice things up. Welcome to **Wasa Daily** - we make news easier to swallow!



EXHIBITION

FINLANDIAHOUSE

Finlandia Exhibition – A new permanent Finnish exhibition opens the doors to history and architecture



A new, permanent exhibition has opened in the heart of Helsinki, on the shores of Töölönlahti Bay, which offers an in-depth and visually stunning deep dive into the heart of Finnish history.

The Finlandia exhibition, which opened its doors at Finlandia Hall on 4 June, is much more than just a collection of objects – it is an eventful journey to the roots of the creative genius of Alvar, Aino and Elissa Aalto and to important moments in Finland's history.

Finlandia Hall, designed by Alvar Aalto, is an architectural masterpiece in its own right, and now it serves as the perfect stage for this celebration of both Aalto's life's work and Finland's independent path. The exhibition is constantly open, making it an accessible destination for both local and international visitors. Its scale and visual execution make it a

truly memorable experience.

The magic of Aalto and the echo of history

The exhibition provides a fascinating picture of the icon of modern architecture, Alvar Aalto, and his unique craftsmanship. Aalto's design philosophy, which combines organic forms and functionality, is explored in many different ways in the exhibition. But it's not just about architecture; The exhibition takes visitors on a journey through Finland's rich history and Finlandia Hall's significance in the international arena.

One of the most impressive parts of the exhibition is the room dedicated to the 1975 CSCE meeting. It was in this building that the "Helsinki Spirit" was created, an attempt at détente and cooperation during the years of the Cold War. Although the zeitgeist may not be as relevant in today's world, the historical weight of the moment is palpable. It is impressive to see how world leaders such as Soviet President Leonid Brezhnev and US President



Gerald Ford have gathered in the same building and shaped history.

The walking experience is further deepened by the first room of the exhibition, where Sibelius's iconic Finlandia hymn is played. The music, combined with the visual story, creates a powerful sense of national pride and heritage.

An international attraction and a favourite among schoolchildren

The exhibition will undoubtedly be a popular destination for both foreign tourists and domestic visitors. Meeting the Argentine couple at the show confirmed this international appeal. They told us that Alvar Aalto is an essential part of the basic education of architecture studies in Argentina. This demonstrates Aalto's universal significance and the exhibition's ability to reach audiences globally.

In Finland, the Finlandia exhibition has the potential to become a regular event on school trips. It offers a wonderful overview of Finland, its history and significant

people in a way that is both educational and deeply experiential. It would be highly recommended for every Finnish citizen to visit this unique exhibition once – it gives a deeper understanding of our country and its soul.

Information to the visitor

The Finlandia exhibition is open as follows:

Mondays and Tuesdays from 9 a.m. to 7 p.m.

Wednesday to Saturday from 9 a.m. to 8 p.m.

Sundays from 11 a.m. to 6 p.m.

The exhibition is part of a larger new service package at Finlandia Hall, which also includes a terrace-wine café, a design shop and a bistro restaurant.

The Finlandia exhibition is a true tribute to the unique life's work and creativity of Aino, Elissa and Alvar Aalto. It is at the same time a dive into the core of Finnishness and a journey that leaves a mark on every visitor's mind. Don't miss out on this new national treasure!



